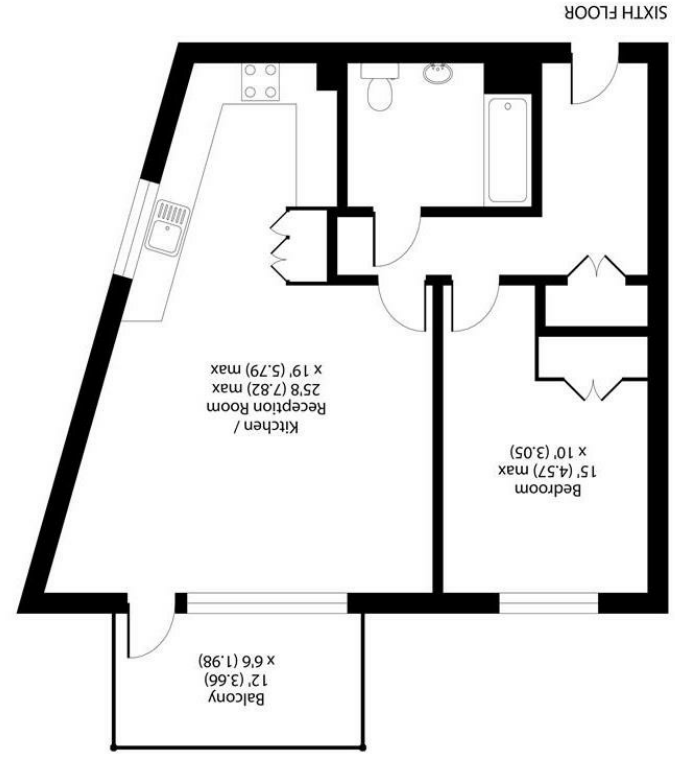


**Important Information**  
 All appliances listed in these details are only 'as seen' and have not been tested by Gibson Lane, nor have we sought certification of warranty or service, unless otherwise stated. Measurements, areas and distances are approximate. Floor plans and photographs are for guidance purposes only and must not be relied upon for any purpose. These details are offered on the understanding that all negotiations are made through this company. Neither these particulars, nor verbal representations, form part of any offer or contract, and their accuracy cannot be guaranteed.

England & Wales	
Energy Efficiency Rating	A
Environmental Impact (CO <sub>2</sub> ) Rating	B

Certified Property Measurement  
 Floor plan produced in accordance with RICS Property Measurement Standards (RICS Professional Property Measurement Standards (RICS Residential) © RICS 2021)

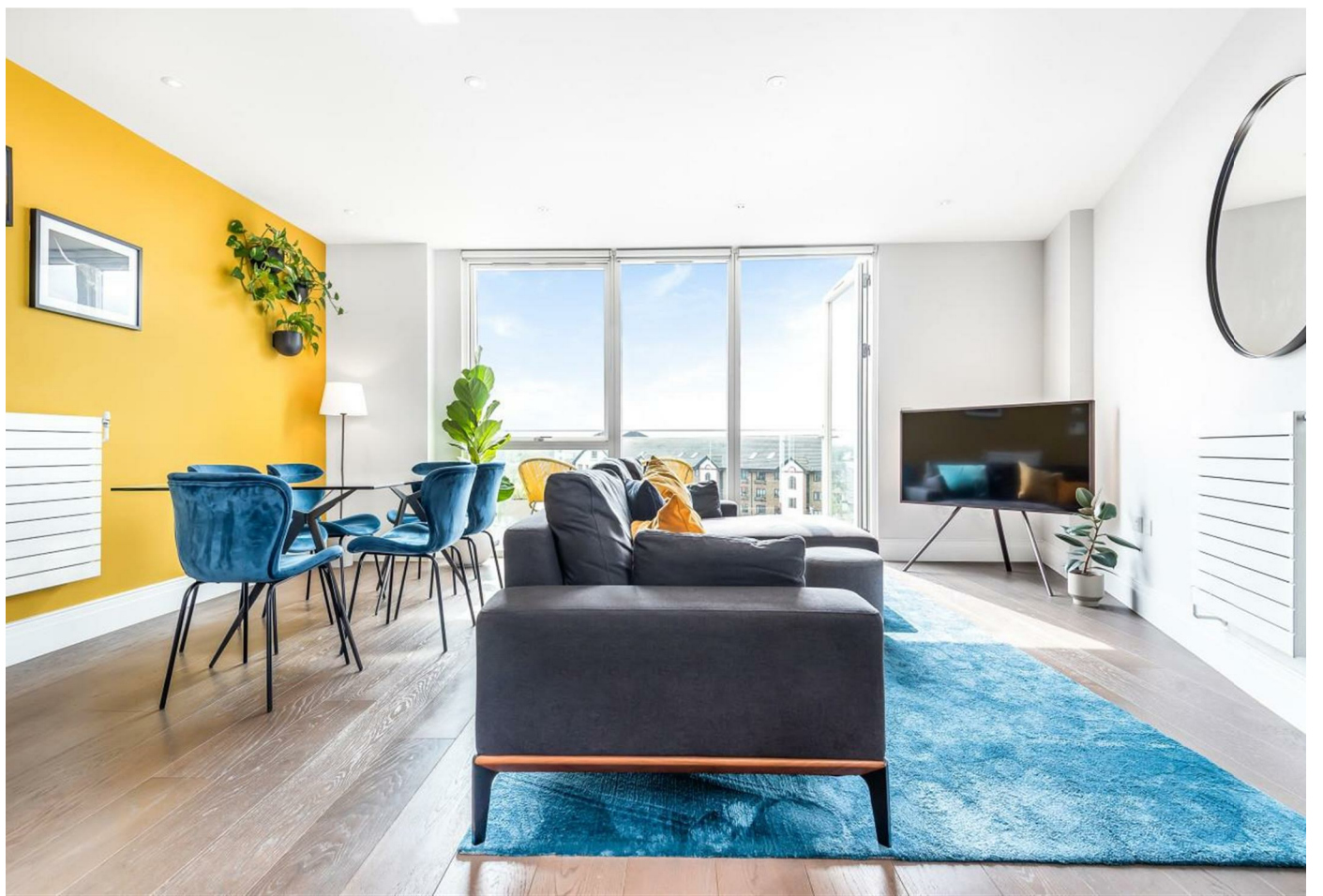
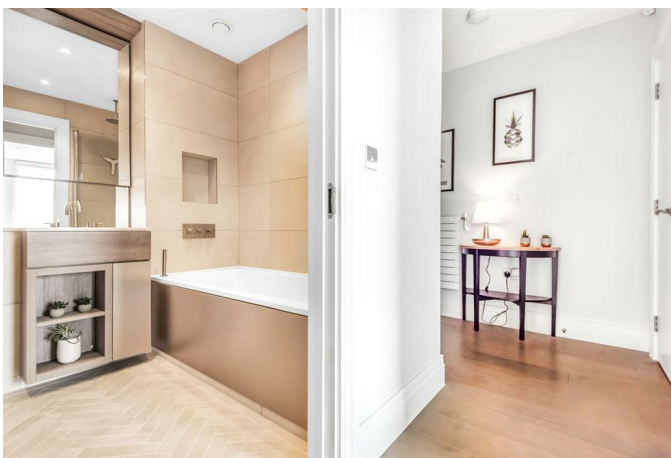
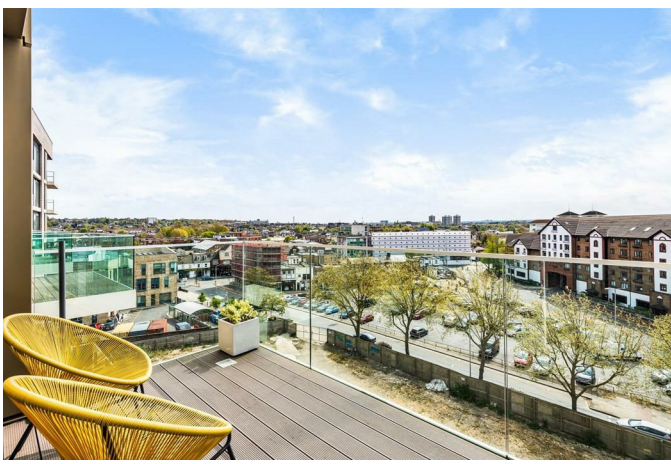


Approximate Area = 666 sq ft / 61.9 sq m  
 For identification only - Not to scale

34 Richmond Road  
 Kingston upon Thames  
 Surrey  
 KT2 5ED  
 www.gibsonlane.co.uk  
 Tel: 020 8546 5444



**Queenshurst Square**  
 Kingston Upon Thames KT2 5FW



## Queenshurst Square

Kingston Upon Thames KT2 5FW

Guide Price £475,000

An impressive one bedroom apartment located in this modern development within close proximity of the River Thames and Canbury Gardens.

### Description

This luxurious one bedroom apartment situated on the sixth floor of this modern development by Berkeley Homes offers ample living accommodation approaching 700sqft. This stunning property is finished to the highest of quality and includes spacious hallway, a fantastic bedroom with excellent storage, bright and airy open plan kitchen/reception room, modern bathroom and a large balcony. Further benefits include one secure underground parking space, a residents gym, cinema room, communal gardens and 24 hours concierge. Viewings are highly recommended!

### Situation

Queenshurst is a modern residential development and is one of the more sought after locations in North Kingston. The development is conveniently positioned for Canbury Gardens and the River Thames with Kingston town centre, station and Richmond Park a short distance away. The standard of schooling in the immediate area is excellent for both private and state sectors and the area has an extensive range of leisure facilities including golf courses, tennis clubs, sailing, riding schools and private & public health clubs.

**Tenure:** Leasehold

**Local Authority:** Kingston Upon Thames

